

# FRAMECRETE

## FIREWALL 2"

INSTALLATION GUIDE

2023

## INDEX

---

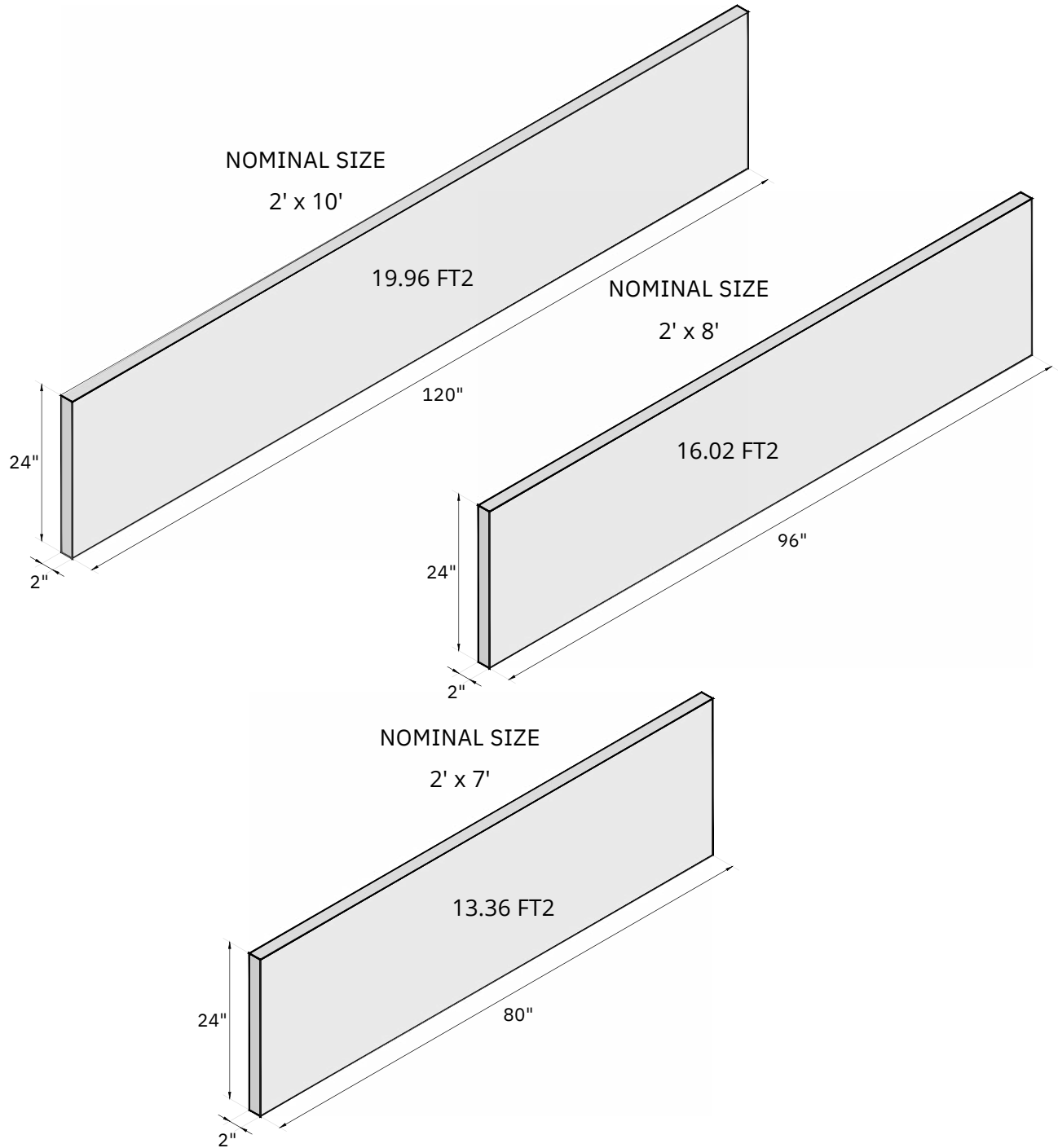
BEFORE STARTING	01
LITECON FIREWALL PANEL DIMENSIONS	02
FIREWALL FRAME	03
ALUMINUM BURN CLIP INSTALLATION	04
FIRST ROW AND ADHESIVE APPLICATION	05
LITECON FIREWALL PANEL INSTALLATION	06
MIN OVERLAP AND SECTION A	07
ASSEMBLY FIREWALL	08

---

## BEFORE STARTING

- 
- 1.- BLUEPRINTS
  - 2.- LITECON FIREWALL
  - 3.- LITECON ADHESIVE
  - 4.- SCREWS: FOR STUD AND LITECON FIREWALL. IN BOTH CASES THE SCREW SHOULD HAVE A COATING THAT PROVIDES CORROSION RESISTANCE.
  - 5.- TAP WATER
  - 6.- ELECTRIC POWER 110/220V
  - 7.- A EMPTY BUCKET
  - 8.- GROUT MIXING PADDLE
  - 9.- ELECTRIC DRILL
  - 10.- BATTERY SCREWDRIVER
  - 11.- RUBBER HAMMER
  - 12.- BUBBLE OR LASER KNIFE
  - 13.- JOINT KNIFE
  - 14.- CIRCULAR SAW
  - 15.- 7" DIAMOND TURBO BLADE
-

FIREWALL PANEL DIMENSIONS

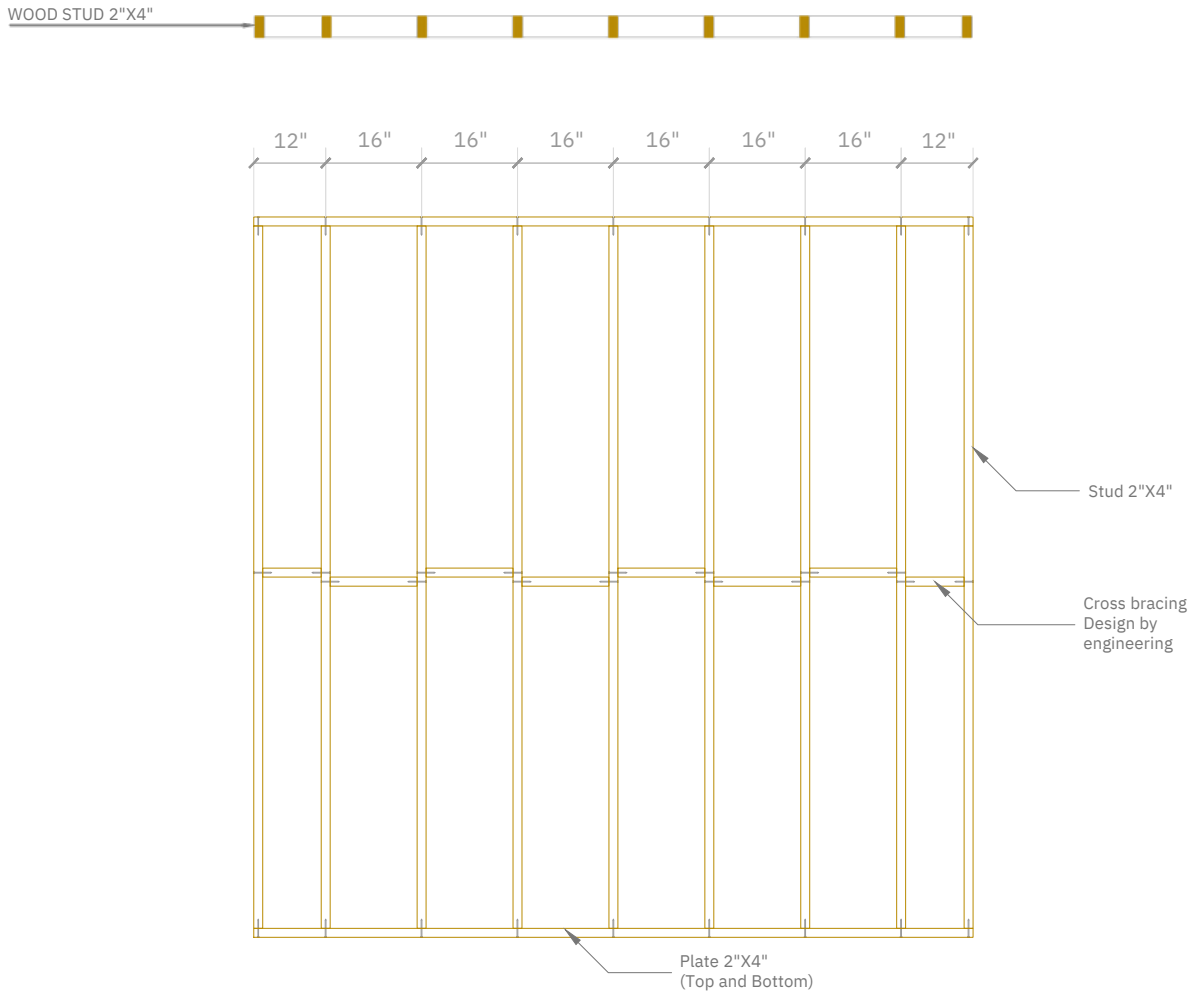


NOTES

1. LENGTH CAN BE ADJUSTED TO CUSTOMERS NEEDS (EVERY 0.2 INCHES) UP TO 120"
2. THE NOMINAL SIZE OF THE LITECON FIREWALL IS 2" X 2' X 10', THE ACTUAL SIZE IS 1.96" X 24.02" X 119.69"
3. THE NOMINAL SIZE OF THE LITECON FIREWALL IS 2" X 2' X 8', THE ACTUAL SIZE IS 1.96" X 24.02" X 96.06"
4. THE NOMINAL SIZE OF THE LITECON FIREWALL IS 2" X 2' X 7', THE ACTUAL SIZE IS 1.96" X 24.02" X 80.12"

FIREWALL FRAME

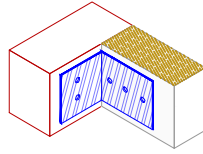
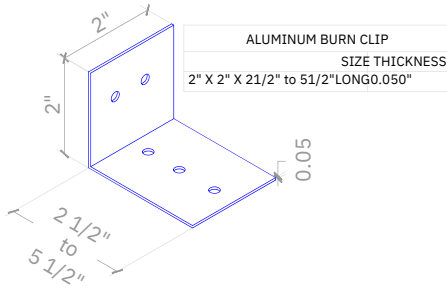
PLAN VIEW



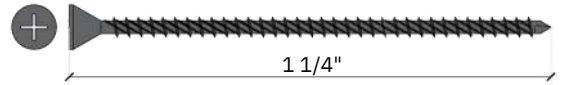
NOTES

- 1.-THE NOMINAL SIZE OF FRAMING STUD IS 2" X 4", THE ACTUAL MEASURE IS 1 1/2" X 3 1/2"
- 2.-THE NOMINAL SIZE OF FRAMING STUD IS 2" X 6", THE ACTUAL MEASURE IS 1 1/2" X 5 1/2"

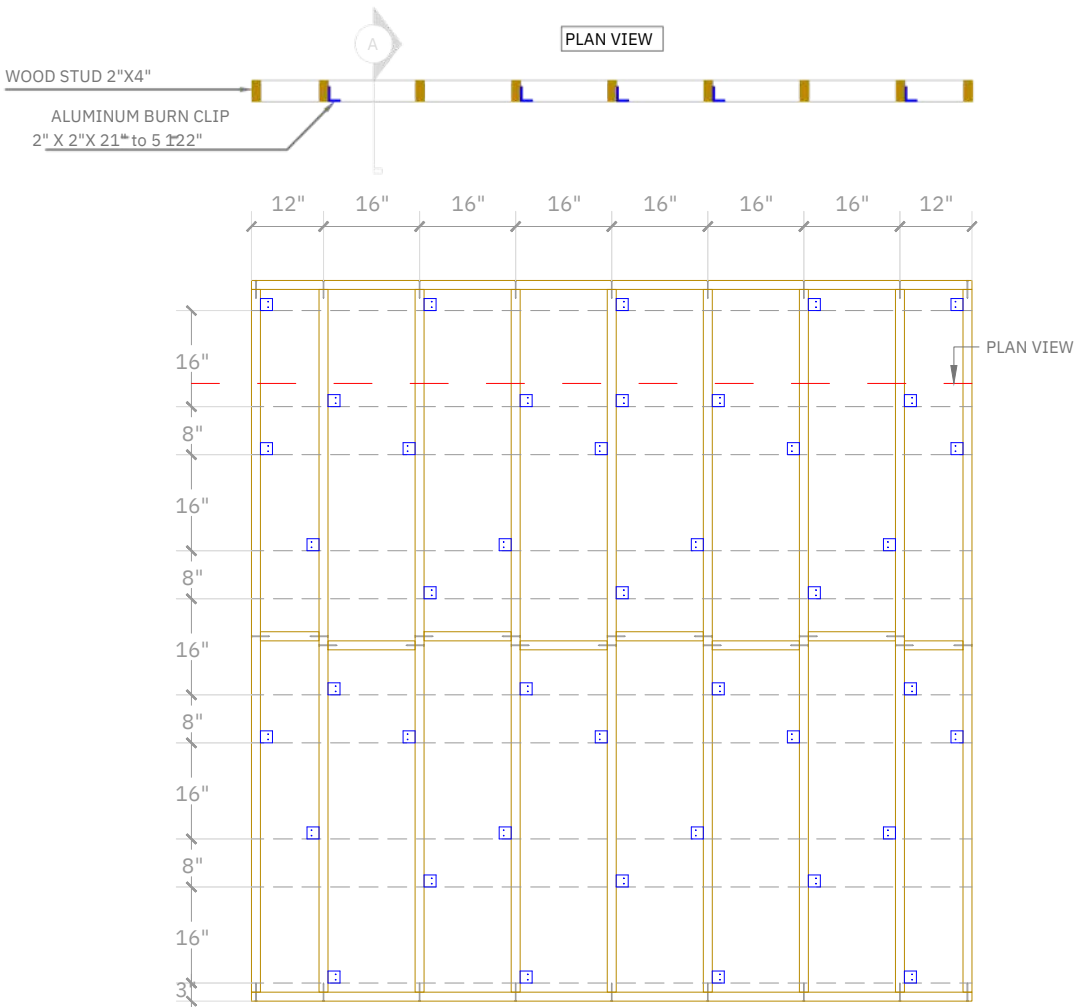
ALUMINUM BURN CLIP INSTALLATION



#6X1-1/4" COARSE DRYWALL SCREW-PHOSPHATE COATED-SHARP POINT



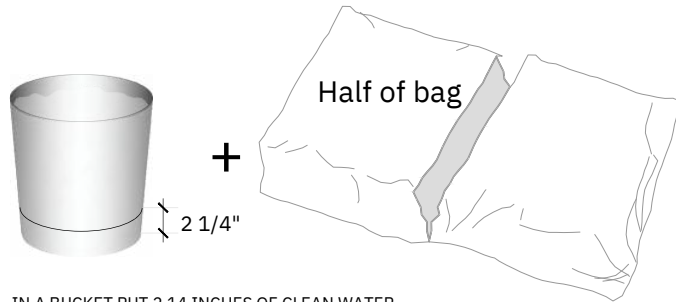
FASTENER FOR STUD



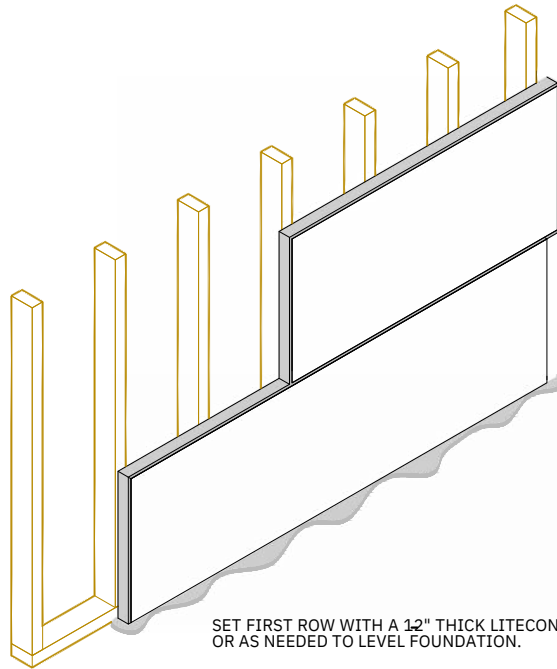
NOTES

1. THE INSTALLATION OF CLIPS ON OPPOSITE SIDE SHOULD BE PLACED IN REVERSE ORDER TO AVOID MEETING ANOTHER SCREW FROM THE OPPOSITE SIDE OF THE WALL.
2. INSTALL THE ALUMINUM BURN CLIP TO WOOD STUD WITH A #6 1-1/4" "W" TYPE FASTENER COATED.
3. WHEN PANELS ARE INSTALLED VERTICALLY, CLIPS SPACED MAX 16 IN. FROM HORIZONTAL JOINTS AND MAX 4 FT OC VERTICALLY PER PANEL.
4. WHEN PANELS ARE INSTALLED HORIZONTALLY, CLIPS SPACED MAX 16 IN. FROM VERTICAL JOINTS AND MAX 4 FT OC HORIZONTALLY PER PANEL.
5. INSTALL THE ALUMINUM BURN CLIP WITH 2 FASTENERS TO WOOD STUD.
6. THE LONGER SIDE OF THE CLIP MUST BE PLACED ONTO THE WOOD STUD.

FIRST ROW AND ADHESIVE APPLICATION



IN A BUCKET PUT 2 1/4 INCHES OF CLEAN WATER,  
POUR HALF OF A BAG OF LITECON ADHESIVE.  
MIX TO OBTAIN A UNIFORM WORKABLE CONSISTENCY WITH NO  
CLUMPS. LET REST FOR 5 MINUTES, MIX AGAIN AND APPLY

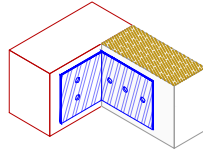
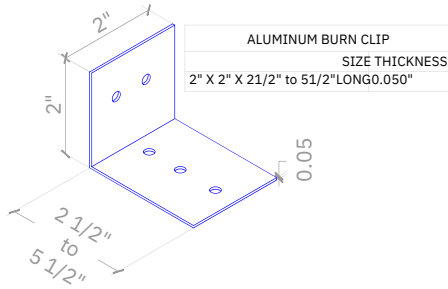


SET FIRST ROW WITH A 1/2" THICK LITECON ADHESIVE  
OR AS NEEDED TO LEVEL FOUNDATION.

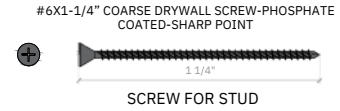
NOTES

- 1.LEVEL FIRST ROW WITH LITECON ADHESIVE
- 2.MAKE SURE TO APPLY ENOUGH ADHESIVE, AT LEAST 1/16" THROUGHOUT THE ENTIRE MATING FACES
- 3.ONCE THE ADHESIVE IS MADE OR MIXED WITH WATER IT SHOULD BE USED WITHIN A MAXIMUM OF 30 MINUTES

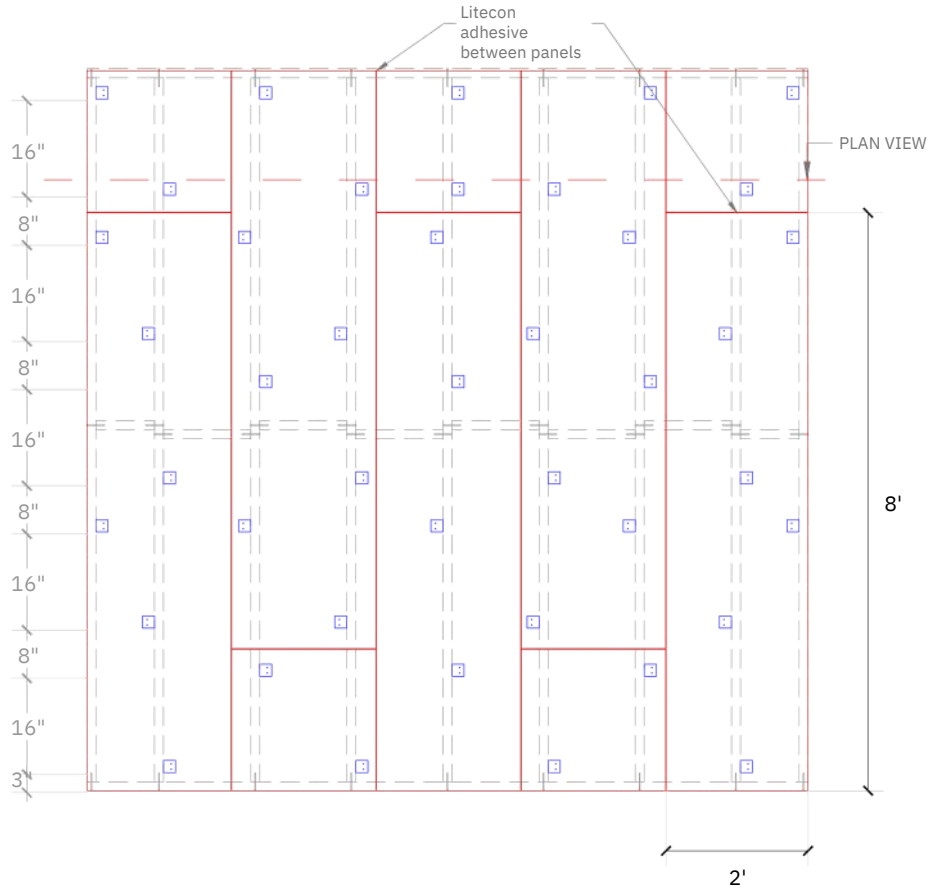
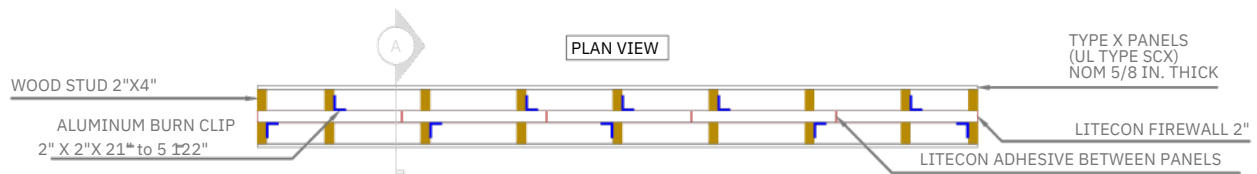
FIREWALL PANEL INSTALLATION



FASTENER FOR LITECON FIREWALL PANEL



SCREW FOR STUD

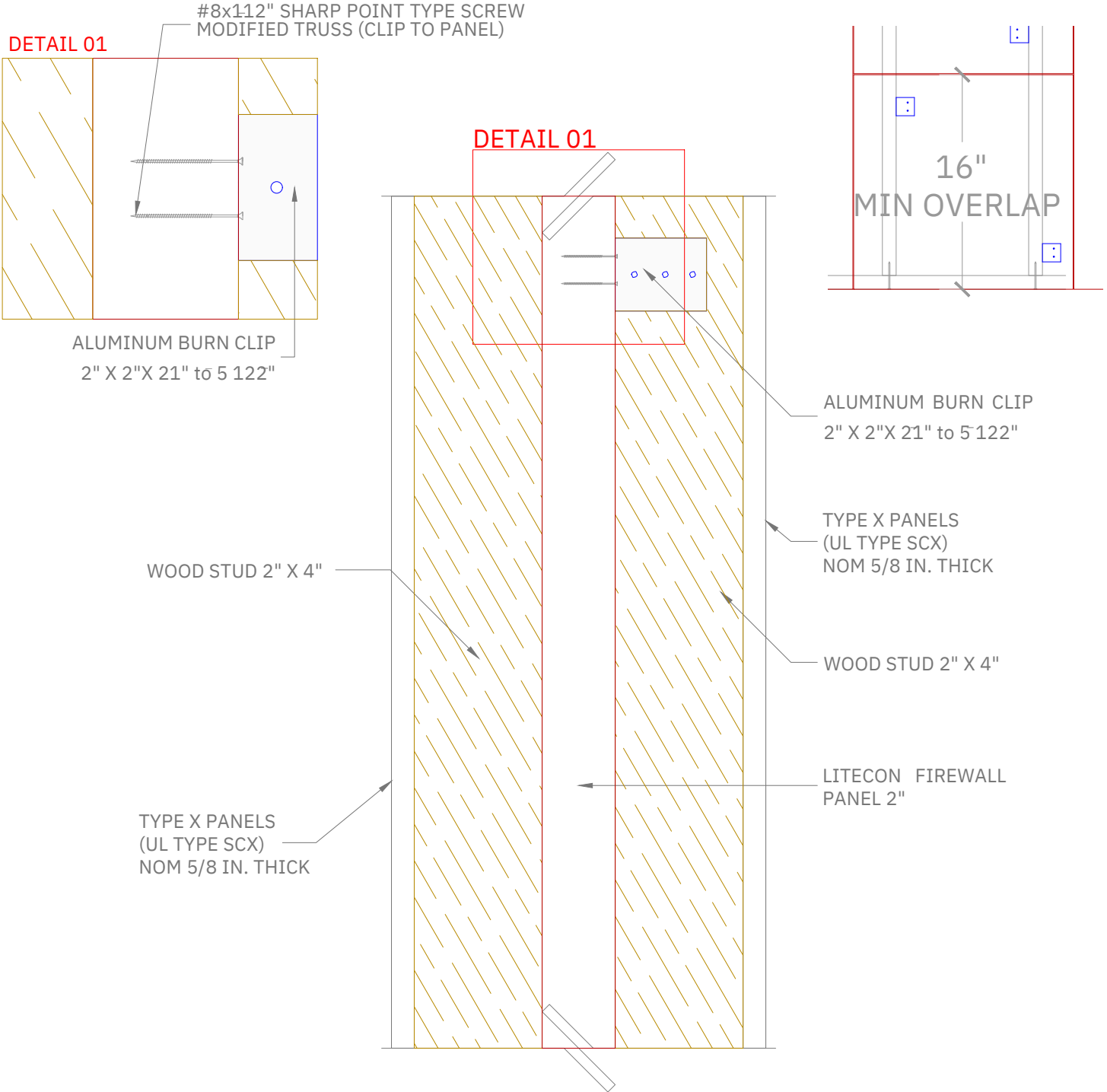


NOTES

1. INSTALL THE ALUMINUM BURN CLIP TO PANEL WITH A #8X112" SHARP POINT TYPE SCREW MODIFIED TRUSS, WAFFER HEAD.
2. INSTALL 2 FASTENERS TO LITECON FIREWALL PANEL.
3. ALUMINUM BURN CLIPS SPACED MAX 16 IN. FROM HORIZONTAL JOINTS AND 4 FT OC VERTICALLY PER PANEL
4. THE LONGER SIDE OF THE CLIP MUST BE PLACED ONTO THE WOOD STUD.
5. MAX. 4 IN. AIRSPACE BETWEEN EDGE OF STUD AND PANEL.
6. 6 CLIPS PER PANEL FACE
7. MINIMUM OF 3 CLIPS PER 7 FT, 8 FT OR 10 FT LONG SIDE
8. MINIMUM OF 2 CLIPS PER 2 FT AND 3 FT PANEL CUT



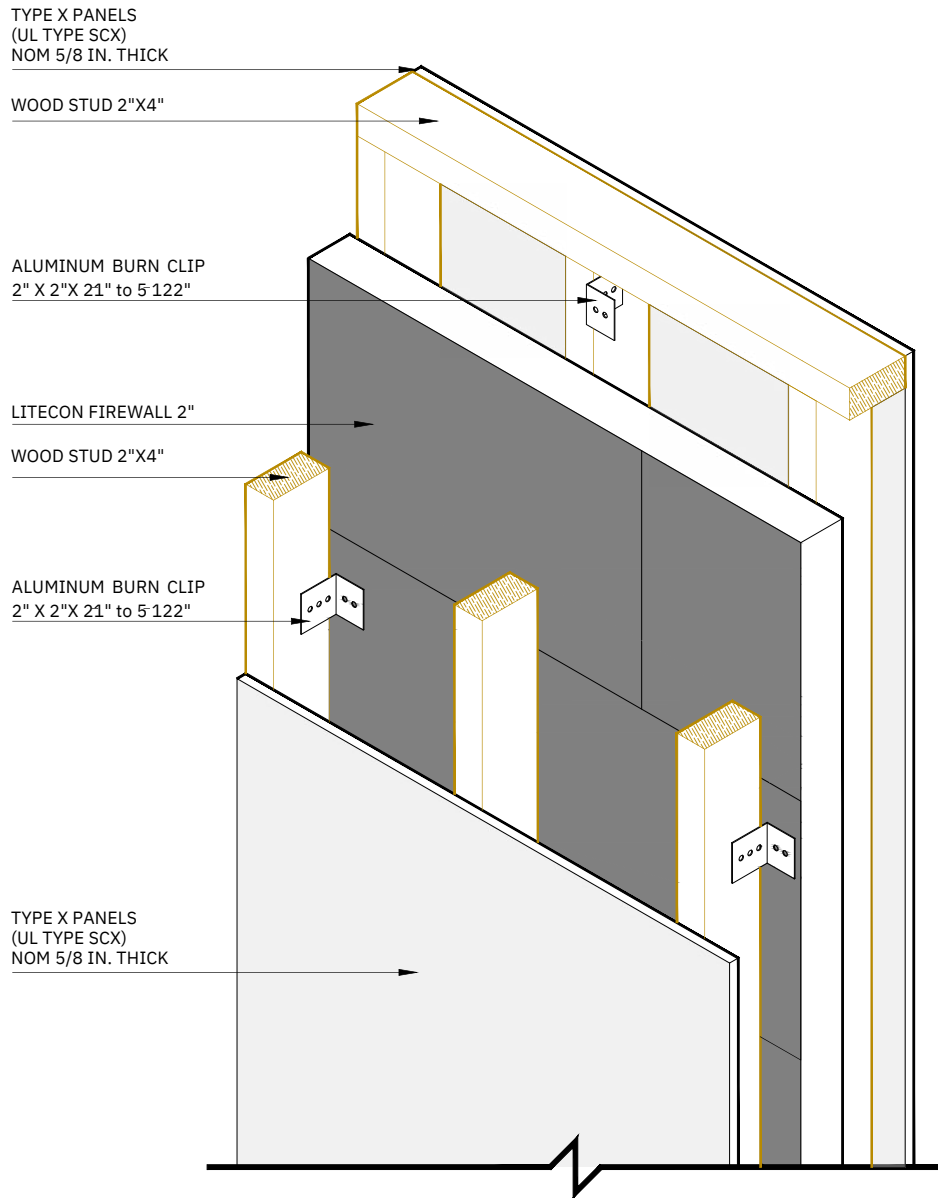
MIN OVERLAP AND SECTION A



NOTES

1. THE INSTALLATION OF CLIPS ON OPPOSITE SIDE SHOULD BE PLACED IN REVERSE ORDER TO AVOID MEETING ANOTHER SCREW FROM THE OPPOSITE SIDE OF THE WALL
2. INSTALL THE ALUMINUM BURN CLIP TO WOOD STUD WITH A #6x 1-1/4" COARSE DRYWALL SCREW
3. INSTALL THE ALUMINUM BURN CLIP TO PANEL WITH A #8x1 1/2" SHARP POINT TYPE SCREW MODIFIED TRUSS, WAFFER HEAD
4. INSTALL THE ALUMINUM BURN CLIP WITH 2 FASTENERS TO WOOD STUD AND 2 FASTENERS TO THE LITECON FIREWALL PANEL THE LONGER SIDE OF THE CLIP MUST BE PLACED ONTO THE WOOD STUD.
5. MAX. 4 IN. AIRSPACE BETWEEN EDGE OF STUD AND PANEL.

ASSEMBLY FIREWALL



# FRAMECRETE

## FIREWALL 2"

INSTALLATION GUIDE

2023